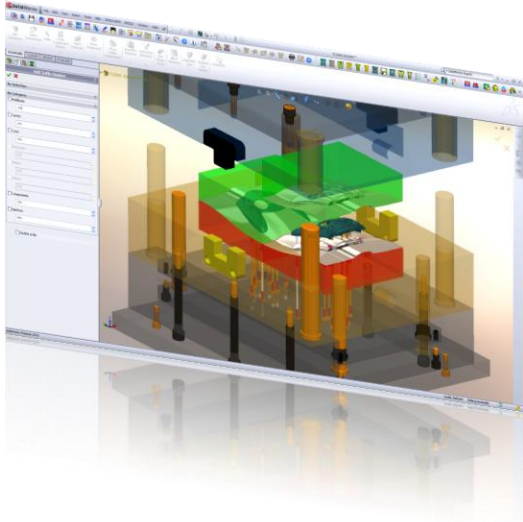




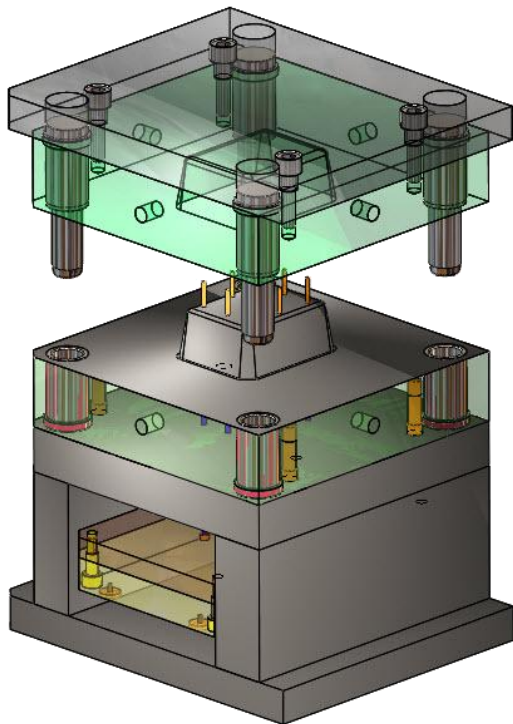
# IMOLD™ V10



## Project Control | Prefix/Suffix

In a collaborative environment, effective file management is vital to harness the innovation process. By adding prefix/suffix numbers, incremental or in decreasing order to easily identifies certain groups of assembly. It's easy to find assembly documents based on their suffix groups.

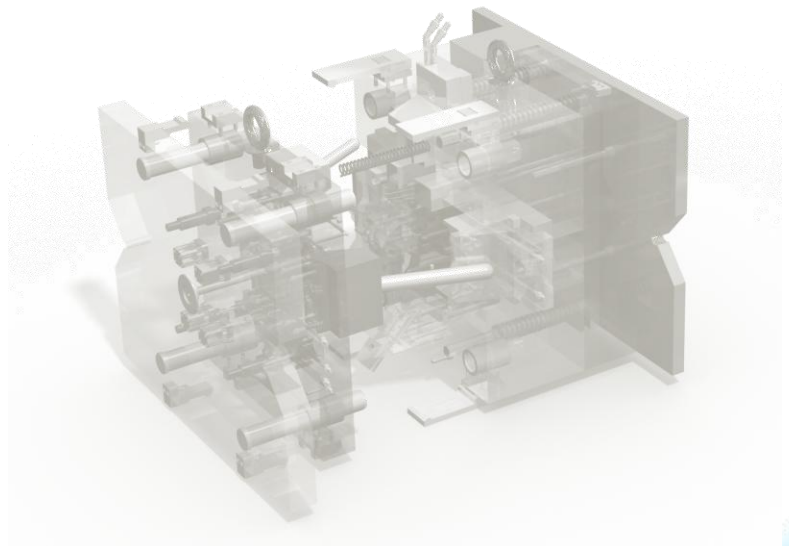
IMOLD allows you to easily add prefixes and suffixes directly to the assembly at any time of the design phase. Specific assemblies are can identified from the PDM system through the prefixes and suffixes. More flexible file management and dramatically reduce documentation time.

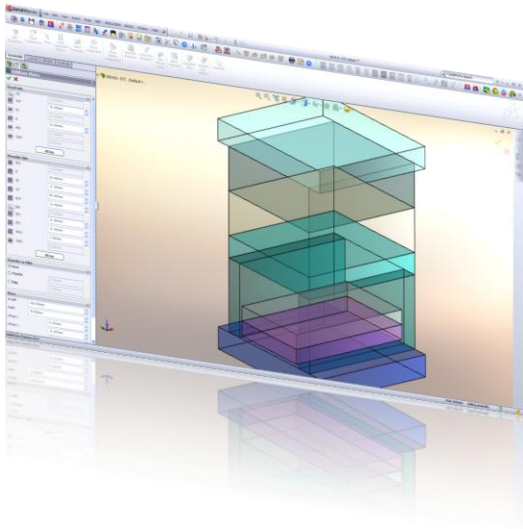


## Core/Cavity Builder | Integer core and cavity plates

When the core and cavity is machined from a large plate or block of steel or cast in one piece and used without bolstering as one of the mold plates. This is termed as an integer core plate or integer cavity plate. This design is preferred for single-impession molds because of the strength, smaller size and lower cost characteristics. It is not used as much for multi-impession molds as there are other factors such as alignment which must be taken into consideration.

In IMOLD V10, you can copy core and cavity faces directly to the core or cavity plates for the integer plate cut.





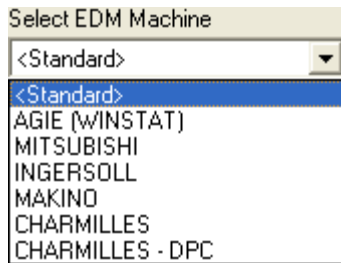
## MBC | Mold Base Customization

Customizing non-standard plate sets. Allowing you to define the plate set, and add components to align the assembly from the catalog.

Once the mold configuration is completed and the moldbase has been created, you can save it into the database. You can load the customized moldbase assembly; modify the plate thickness, component sizes and location.

With Right Mouse Click Gestures to increase efficiency when customizing non-standard plate sets.

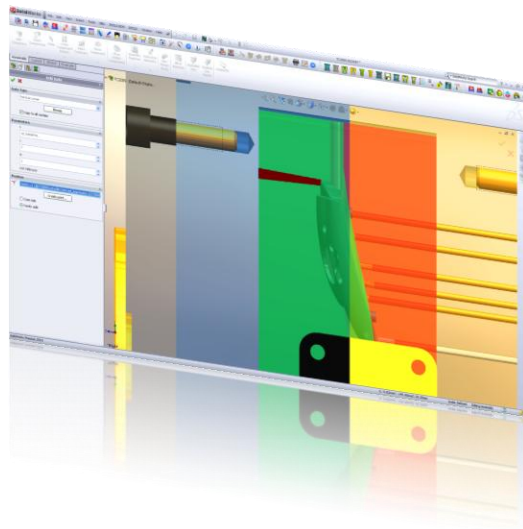
The MBC comes together with IMOLD Premium package or as a standalone MBC.



## EDM | Machine Setup

The EDM (Electro-Discharge Machining) Setup dialog enables you to set general parameters for components, electrodes and locations before creating a machine-readable file. Each EDM Machine type has its own specific set of parameters.

In the machine setup, define spark gap compensation parameters, the number of electrodes needed for the specific job and more.



## Feed System | Gates & Runners Enhancements

IMOLD V10 simplifies the creation of vertical runners. The new functionality allows vertical runners to automatically coincide with base of the inserts. Reduces tedious tasks of measuring runner height and increase design efficiency.

## Other | Enhancements

Large Assembly Handling – incremental improvements from previous version.  
Components – added more new components into libraries.  
Drawings – hole charts.

**AUTHORIZED IMOLD RESELLER**

**IMOLD USA**  
CoreWare Inc  
24780 Hathaway Suite 304  
Farmington Hills, MI 48335  
Phone (248) 926 3814

**IMOLD Japan**  
〒222-0002  
横浜市港北区師岡町 1062-3  
Phone & Fax 045 549 1275  
www.imold.jp



21, Science Park Road #03-04  
Singapore Science Park II  
The Aquarius, 117628 Singapore  
Phone +65 6775 1565  
www.imold.com